



U.S. ARMY CORPS OF ENGINEERS
CARIBBEAN DISTRICT

FY25+ WORKLOAD FORECAST



Río de la Plata Channel Bank Stabilization



Guajalaca Dam Permanent Repairs



Dredging Work



US Army Family Housing

Contact our Small Business Office:

Mariano Torres Feliciano
 Chief, Office of Small Business Programs
 Email: taskforcevipr-sb@usace.army.mil
 Mobile: 787.220.0225
 USACE, Caribbean District
 Fundación Angel Ramos, Annex Building
 2nd Floor, Suite 202
 383 Franklin D. Roosevelt Ave.
 San Juan, PR 00918



AS OF 7/22/2025

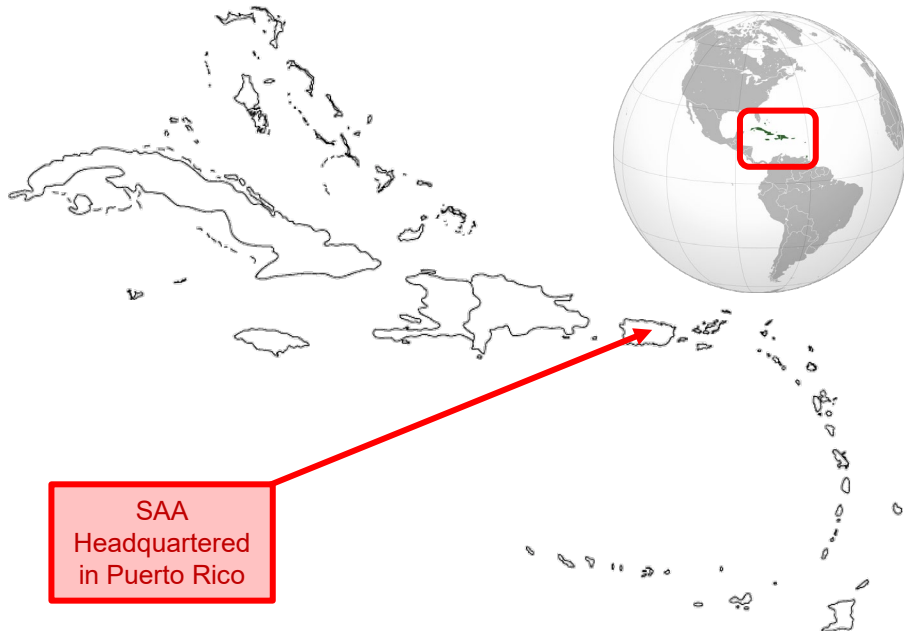


ABOUT US:

The USACE Caribbean District (SAA) proudly serves as the main hub for USACE efforts in the Caribbean, leading a multi-billion-dollar Civil Works Program across Puerto Rico and the U.S. Virgin Islands. SAA also supports the Military Construction (MILCON) program and International and Interagency Services (IIS), bolstering military readiness and civil infrastructure throughout the region.

- Established in 2024 as the 43rd USACE district.
- Oversees military construction, navigation initiatives, and emergency response projects.
- Provides Interagency and International Services.
- Acts as the local construction agent for other USACE districts in the region.
- Serves as the “One Door to the Corps” for all USACE services in the Caribbean region.

AREA OF RESPONSIBILITY



CIVIL WORKS PROGRAM		
INVESTIGATIONS	DESIGN AND CONSTRUCTION	OPERATIONS & MAINTENANCE
Rio Nigua Validation Report	Aquatic Ecosystem Restoration (AER)	San Juan Harbor O&M (Nav-BIL)
SMALL PROJECTS PROGRAM	Caño Martin Pena (AER-IIJA)	Arecibo O&M (Nav-BIL)
Continuing Authorities Program (CAP)	Flood Risk Management (FRM)	Ponce Harbor O&M (Nav-BIL)
Rio Aibonito FRM	Rio de la Plata (FRM – BBA 2018)	Mayaguez Harbor O&M (Nav-BIL)
Floodplain Management Services (FPMS)	Rio Grande de Arecibo (FRM – BBA 2018)	Inspection of Completed Works, PR & USVI
Ponce FPMS	Rio Puerto Nuevo (FRM – BBA 2018)	Project Condition Surveys, PR & USVI
Planning Assistance to States (PAS)	Rio Guanajibo (FRM – BBA 2018)	
USVI Compound Flooding Hotspots	Rio Nigua (FRM – BBA 2018)	
Ponce FPMS	Rio Grande de Manati (FRM - DRSAA)	
PR Dam Safety	Rio Culebrinas (FRM - DRSAA)	
Interagency Non-structural FPMS	Rio Guayanilla (FRM - IJA)	
PR Watersheds	Savan Gut (FRM - IJA)	
PR All Hazards	Turpentine Run (FRM - DRSAA)	
PR Dam Safety	Continuing Authorities Program (CAP)	
PRE-CONSTRUCTION, ENGINEERING & DESIGN (PED)	Estate La Grange (FRM - IJA)	
Coastal Storm Risk Management (CSRM)	Navigation	
San Juan Metro (CSRM)	San Juan Harbor Deepening (Navigation – IJA)	
MILITARY CONSTRUCTION and INTERAGENCY & INTERNATIONAL SERVICES (IIS) PROGRAM		
MILITARY CONSTRUCTION (MILCON)	INSTALLATION READINESS	
FTB: Army Family Housing	PRARNG: Camp Santiago Ammunition Supply Point	
PRARNG: Camp Santiago Barracks	PRARNG: Soil Sampling Bldg 563	
PRARNG: Camp Santiago DFAC	DODEA: PA System Upgrades (FTB and Ramey Schools)	
PRARNG: Camp Santiago HQ	DODEA: Ramey Electrical Repairs	
PRARNG: Fort Allen Readiness Center	FTB: RWH Systems Maintenance	
VIARNG: STT Vehicle Maintenance Shop	FTB: Sanitary Sewer Study	
VIARNG: STX Civil Support Facility	ENVIRONMENTAL	
ERCIP: MCA - FY-20 Puerto Nuevo USAR Solar Array	FTB: Old AES MOA	
INTERNATIONAL SERVICE	INTERAGENCY SERVICE	
DOMREP: Rare Earth Elements	PREPA: Guajataca Dam Permanent Repairs	
US Embassy Barbados: Dominica Material Testing Lab	PREPA: Patillas Dam Seismic Retrofit Pre-Award Support	
	PREPA: Technical & Management Services	
	DOE-LM: BONUS Site, Rincon	

AS OF 7/22/2025



FY25+ CONTRACT OPPORTUNITIES



A&E / SERVICE / CMS CONTRACTS			
PROJECT MISSION	PROJECT NAME	SOLICITATION TYPE	QUARTER ADVERTISED
Civil Works	Rio Puerto Nuevo (Contract 7-A/B/C) — Design	A/E MATOC	Advertised
Civil Works	Rio Puerto Nuevo (Contract 6A) — Geotechnical Surveys	A/E MATOC	Q4 FY25
Civil Works	Rio Grande de Arecibo (Contract 2) — Design	A/E MATOC	Q4 FY25
Civil Works	Rio Guayanilla — Design	A/E MATOC	Q4 FY25
Civil Works	Rio Guanajibo (Contract 1) — Design	A/E MATOC	Q1 FY26
Civil Works	Rio Nigua — Design	A/E MATOC	Q4 FY26
Civil Works	Rio Nigua — Geotech & Seismic	A/E MATOC	Q4 FY25
Civil Works	San Juan Metro – Cataño Breakwaters	A/E MATOC	TBD
Civil Works MILCON	Military and Civil Works Design IDIQ	TBD	Q1 FY26
Civil Works MILCON	Construction Management Services Contract	TBD	Q1 FY26

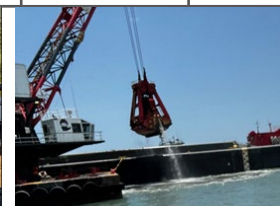


FY25+ CONTRACT OPPORTUNITIES



CONSTRUCTION CONTRACTS					
PROJECT MISSION	PROJECT NAME	MAGNITUDE OF CONSTRUCTION	ACQUISITION STRATEGY	SOLICITATION TYPE	QUARTER ADVERTISED
Civil Works	Rio Puerto Nuevo (Contract 3)	\$500M+	Unrestricted	BVTO	Advertised
Civil Works	Caño Martin Peña (Contract 3 - Phase 1)	\$25M - \$100M	Unrestricted	BVTO	Advertised
Civil Works	Rio de la Plata (Contract 1)	\$250M - \$500M	Unrestricted	BVTO	Q1 FY26
Civil Works	Rio de la Plata — Super Aqueduct Relocation	\$25M - \$100M	TBD	BVTO	Q1 FY26
Civil Works	Rio Puerto Nuevo (Contract 1)	\$100M - \$250M	TBD	TBD	Q4 FY26
Civil Works	Rio Puerto Nuevo (Contract 5B)	\$250M - \$500M	Unrestricted	TBD	Q4 FY26
Civil Works	Rio Puerto Nuevo (Contract 7A)	\$100M - \$250M	TBD	TBD	Q4 FY29

MILITARY CONSTRUCTION CONTRACTS					
PROJECT MISSION	PROJECT NAME	MAGNITUDE OF CONSTRUCTION	ACQUISITION STRATEGY	SOLICITATION TYPE	QUARTER ADVERTISED
MILCON	St. Croix Civil Support Training Facility	\$25M - \$100M	Unrestricted	BVTO	Advertised
MILCON	St. Croix Vehicle Maintenance Shop	\$25M - \$100M	TBD	BVTO	TBD





RIO DE LA PLATA (CNT 1) Construction Contract



NORTH COAST SUPER-AQUEDUCT RELOCATION Construction Contract



FEATURES

- Approx. 1,780,000 m³ channel excavation
- Approx. 772,000 m³ levee fill placement
- Approx. 160,000 m³ scour protection stone placement
- 4 concrete culvert structures (2 - west levee, 2 - east levee)
- Construction for mitigation of Wetlands

SCHEDULE

- Advertisement Q1 FY26

ACQUISITION STRATEGY

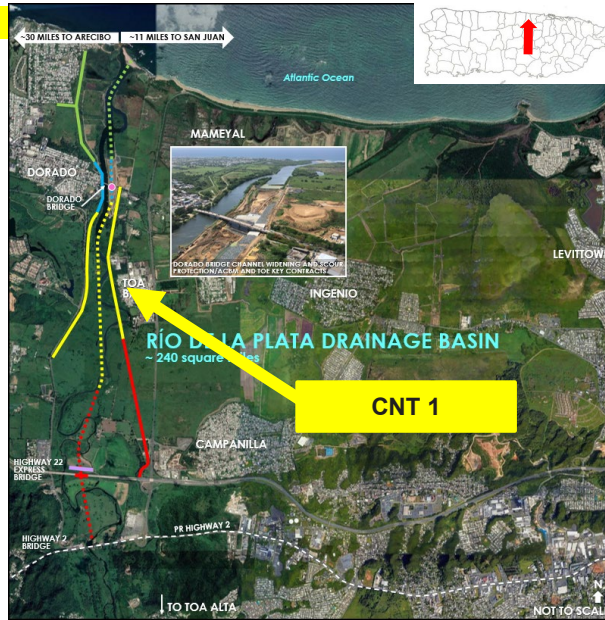
- UNRESTRICTED

SOLICITATION TYPE

- Best Value Trade-Off

MAGNITUDE OF CONSTRUCTION

- \$250M-\$500M



FEATURES

- Relocate ~1,000 LF of 72-inch diameter potable water line below new channel
- Existing water line is Prestressed Concrete Cylinder Pipe (PCCP) to be replaced with 72-inch diameter Welded Steel Pipe (WSP)
- Must remain operational during relocation requiring:
 - Wet tapping
 - Two, 48-inch diameter HDPE temporary Bypass pipes

SCHEDULE

- Advertisement Q1 FY26

ACQUISITION STRATEGY

- TBD

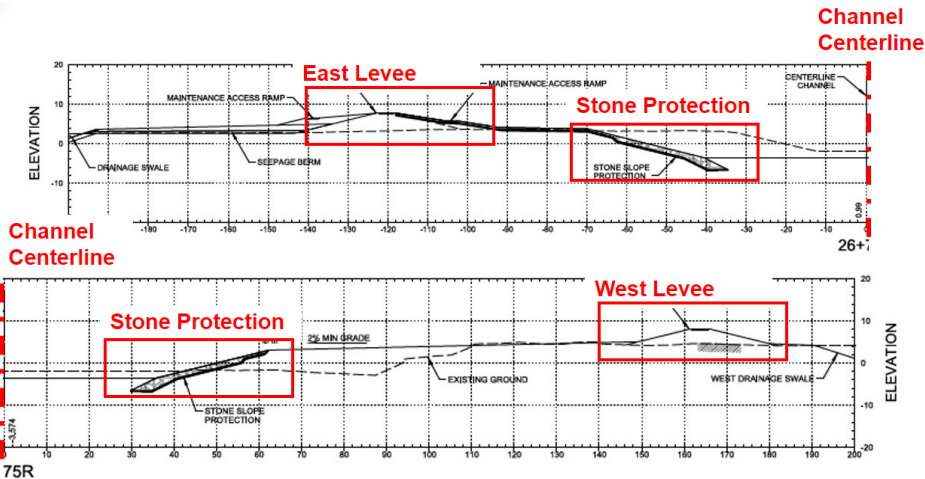
SOLICITATION TYPE

- Best Value Trade-Off

MAGNITUDE OF CONSTRUCTION

- \$25M-\$100M

DETAILS AND PICTURES



DETAILS AND PICTURES



Note: Details are included as general information of the type of work, and not a representation of the final design

Note: Details are included as general information of the type of work, and not a representation of the final design



RIO PUERTO NUEVO (CNT 1) Construction Contract



RIO PUERTO NUEVO (CNT 3) Construction Contract



FEATURES

- Construction of ~3,300 LF of channel improvements of upper Quebrada Margarita
- Sewer Line Relocation
- Electrical Relocations

SCHEDULE

- Advertisement Q4 FY26

ACQUISITION STRATEGY

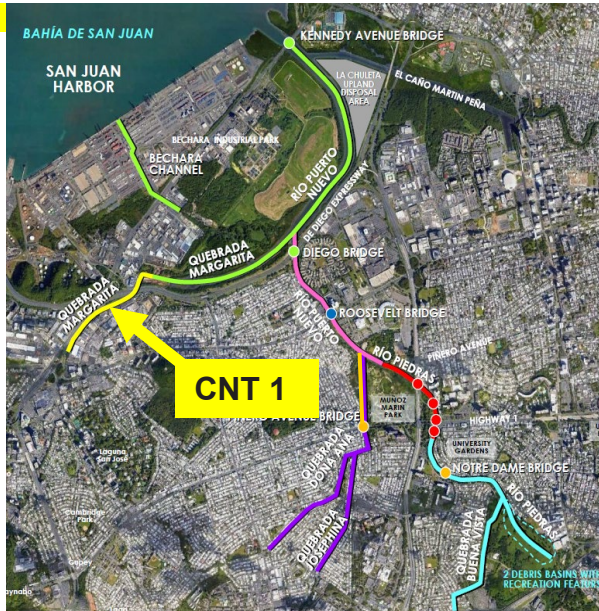
- TBD

SOLICITATION TYPE

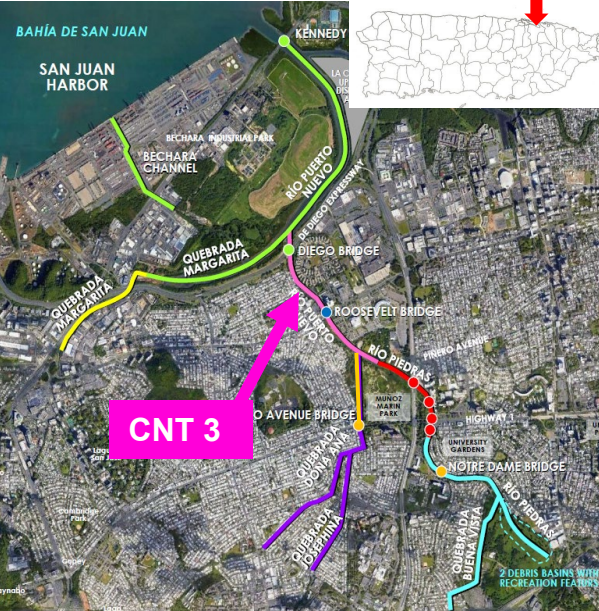
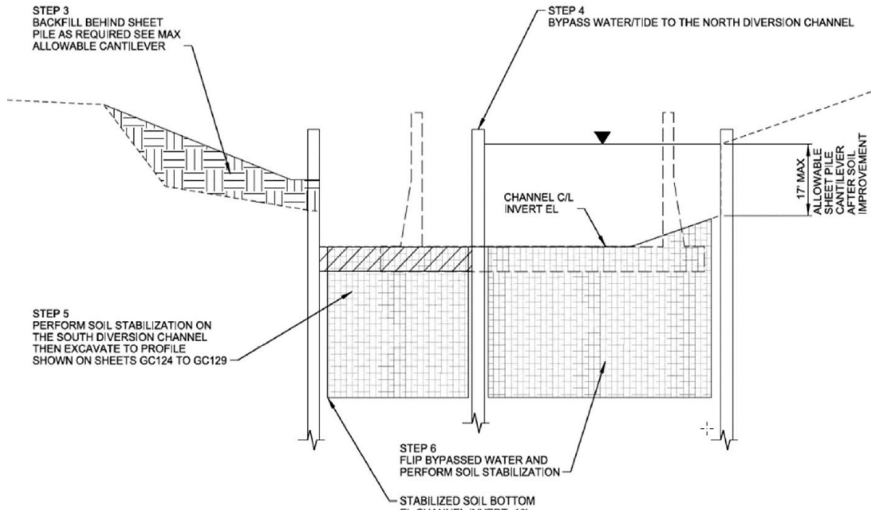
- TBD

MAGNITUDE OF CONSTRUCTION

- \$100M-\$250M



DETAILS AND PICTURES



FEATURES:

- 1,700 concrete drill shaft piles (~100 feet deep)
- Utility bridge
- Sewer siphon
- 200,000 CY of concrete
- 46,000 tons of reinforcing steel
- 600,000 CY of excavated material
- 25,000 CY of suitable fill
- Power line relocation
- 8,000 tons of steel sheet pile

SCHEDULE

- Advertised

ACQUISITION STRATEGY

- UNRESTRICTED

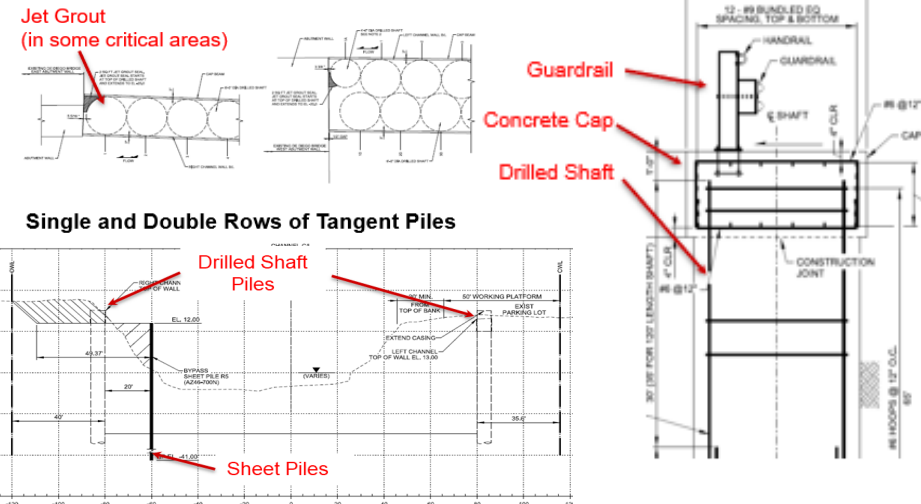
SOLICITATION TYPE

- Best Value Trade-Off

MAGNITUDE OF CONSTRUCTION

- \$500M+

DETAILS AND PICTURES



Note: Details are included as general information of the type of work, and not a representation of the final design

Note: Details are included as general information of the type of work, and not a representation of the final design



RIO PUERTO NUEVO (CNT 5B) Construction Contract



RIO PUERTO NUEVO (CNT 6A) Geotechnical Survey Contract



FEATURES

- ~3,000 LF of channel improvements
- 45ft wide channel
- Bridge replacement
- Channel: Sheet pile/WF pile walls

SCHEDULE

- Advertisement Q4 FY26

ACQUISITION STRATEGY

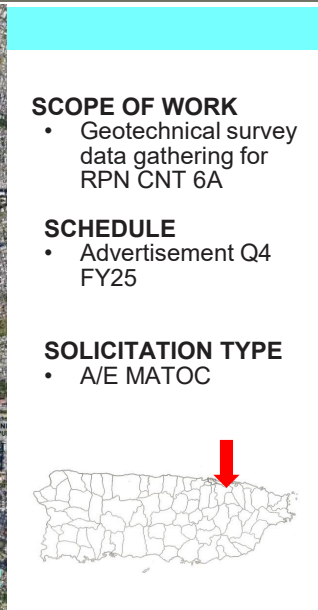
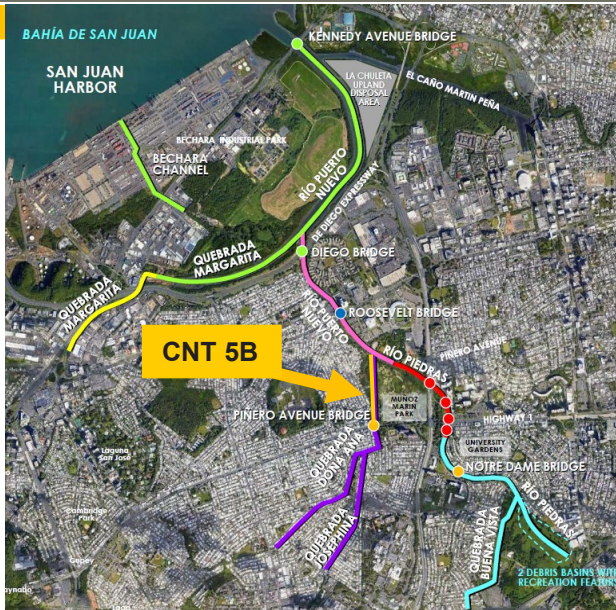
- UNRESTRICTED

SOLICITATION TYPE

- TBD

CONSTRUCTION MAGNITUDE

- \$250M - \$500M



SCOPE OF WORK

- Geotechnical survey data gathering for RPN CNT 6A

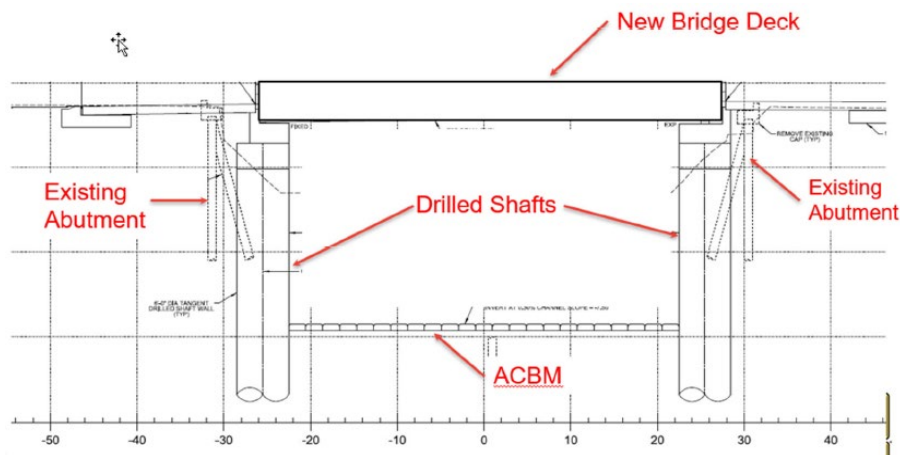
SCHEDULE

- Advertisement Q4 FY25

SOLICITATION TYPE

- A/E MATOC

DETAILS AND PICTURES



DETAILS AND PICTURES

NO.	DATE	DESCRIPTION	STATUS
1	10/15/2025	Geotechnical Survey	Completed
2	11/05/2025	Bridge Deck Construction	In Progress
3	12/01/2025	Final Inspection	Pending

Note: Details are included as general information of the type of work, and not a representation of the final design



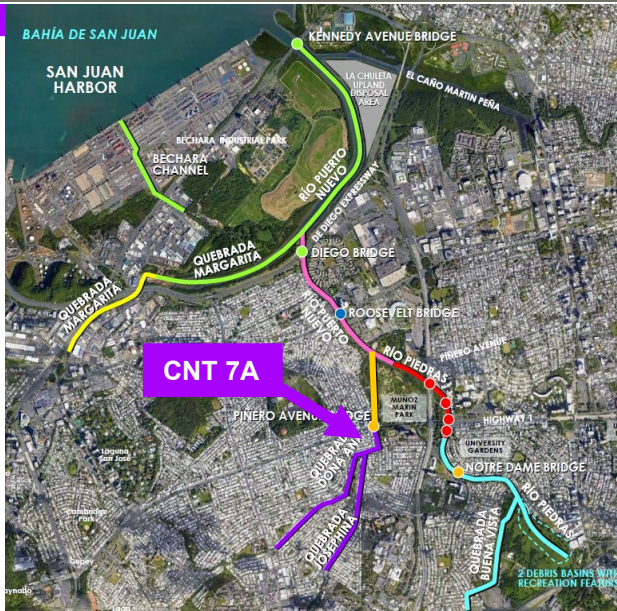
RIO PUERTO NUEVO (CNT 7A) Construction Contract



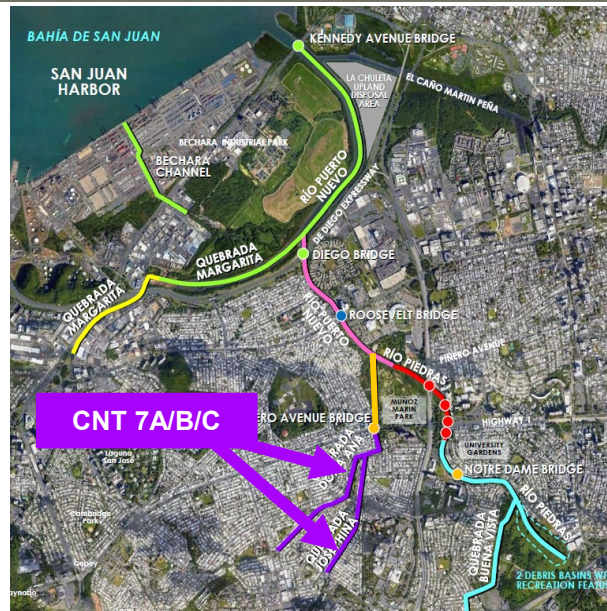
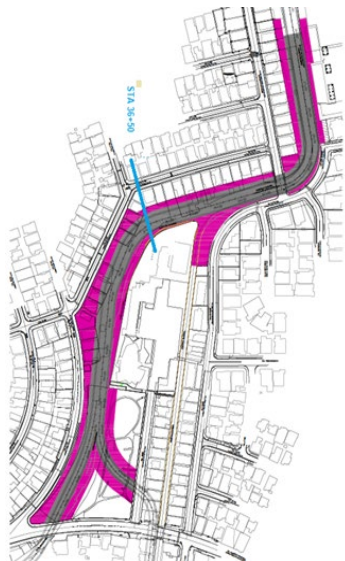
RIO PUERTO NUEVO (CNT 7A/B/C) Design Contract



- FEATURES**
- 1 bridge replacement
 - ~2400 LF of channel improvement along Quebrada Josefina
- SCHEDULE**
- Advertisement Q4 FY29
- ACQUISITION STRATEGY**
- UNRESTRICTED
- SOLICITATION TYPE**
- TBD
- CONSTRUCTION MAGNITUDE**
- Approx. \$150M



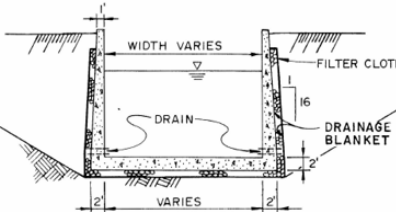
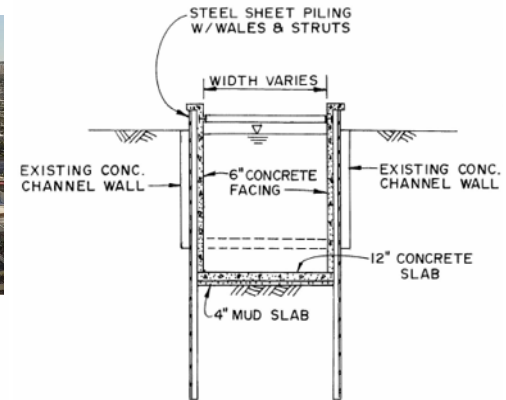
DETAILS AND PICTURES



- FEATURES**
- ~4400 LF of channel improvement along Quebrada Doña Ana.
 - ~2600 LF of channel improvement along Quebrada Josefina
 - 9 Bridge replacements
- SCHEDULE**
- Advertised
- SOLICITATION TYPE**
- A/E MATOC



DETAILS AND PICTURES



Note: Details are included as general information of the type of work, and not a representation of the final design



RIO GRANDE DE ARECIBO (CNT 2)

Design Contract



CAÑO MARTIN PEÑA (CNT 3)

Phase 1 Construction Contract



FEATURES

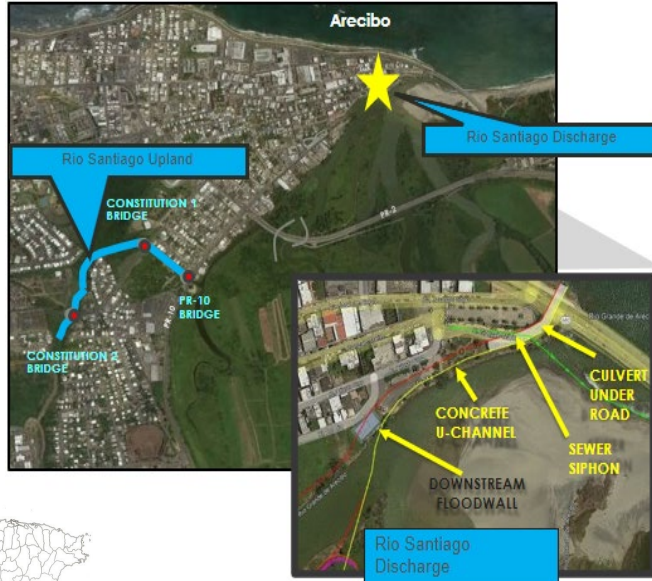
- Deepening and Widening of Santiago Channel
- 3 bridge replacements
- Concrete U-channel
- Two-barrel Culvert
- 42-in sewer siphon
- Downstream floodwalls
- Ocean outfall

SCHEDULE

- Advertisement Q4 FY25

SOLICITATION TYPE

- A/E MATOC



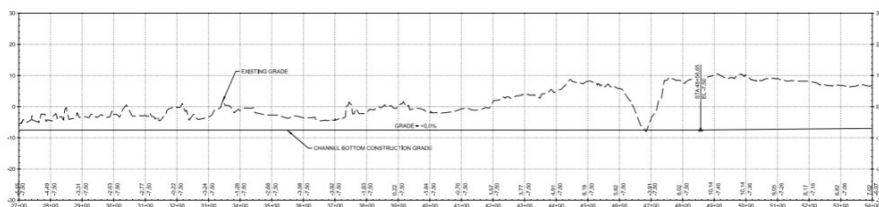
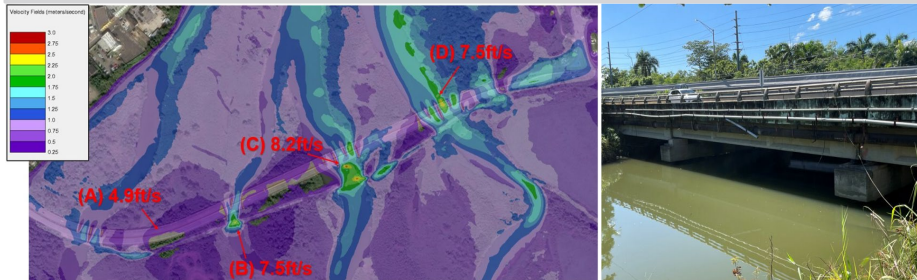
FEATURES

- Dredging channel: ~4400 LF, 100ft x 10ft
- Steel sheet pile walls with concrete cap
- Riprap scour protection for Barbosa Bridge
- Materials Management Area preparation (CDRC)
- Disposal pits preparation
- Access channel connecting staging area with east end of CMP.

SCHEDULE

- Advertised
- ### ACQUISITION STRATEGY
- Unrestricted
- ### SOLICITATION TYPE
- BVTO
- ### ESTIMATED VALUE
- \$25M- \$100M

DETAILS AND PICTURES



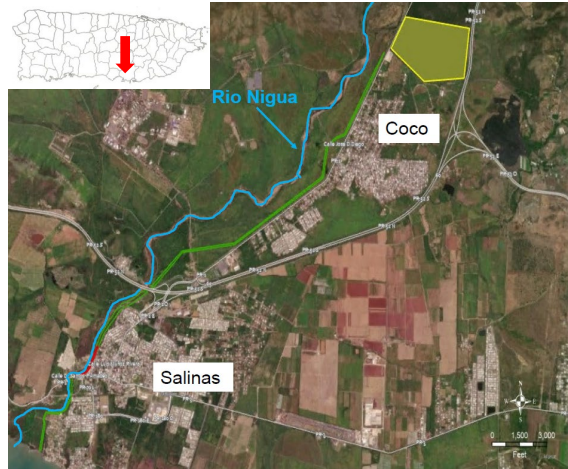
DETAILS AND PICTURES





RIO NIGUA

Design Contract



FEATURES

- ~16300 LF of levee to protect El Coco
- ~8400 LF of earthen levee and ~2100 LF of floodwall protecting Salinas town and beach
- ~3600 LF of earthen levee protecting Salinas Cemetary
- ~2600 LF of levee protecting Las Ochenta Ramps, road raises
- Interior drainage features

SCHEDULE

- Advertisement Q4 FY26

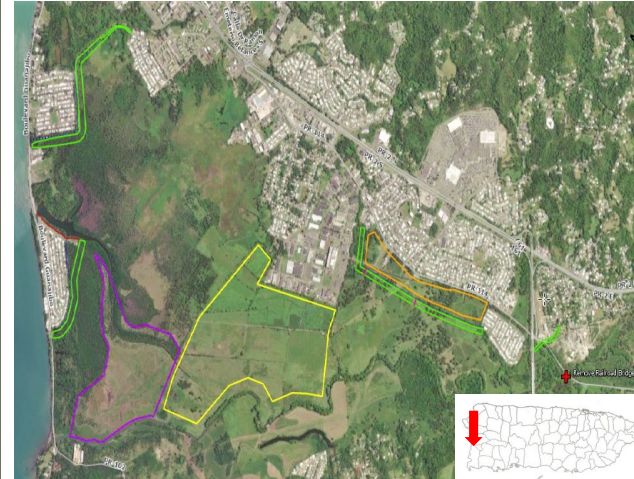
SOLICITATION TYPE

- A/E MATOC



RIO GUANAJIBO (CNT 1)

Design Contract



FEATURES

- ~14,500 LF of earthen levee
- ~3,400 LF of Floodwall
- Elevation of road segment(s)
- Drainage ditches and culverts
- Up to 70 acres of environmental mitigation
- Detention pond

SCHEDULE

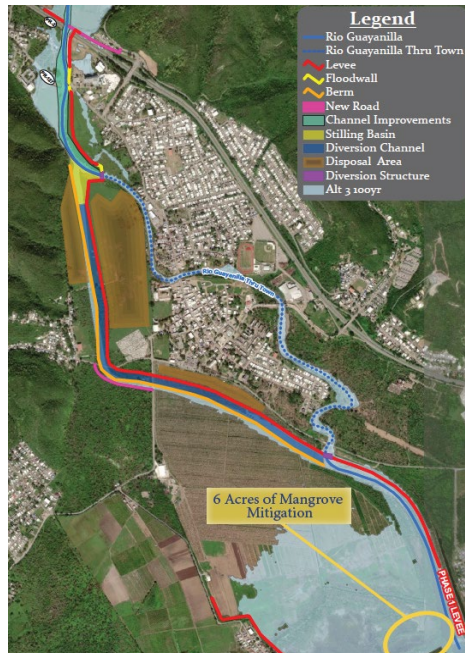
- Advertisement Q1 FY26

SOLICITATION TYPE

- A/E MATOC

RIO GUAYANILLA

Design Contract



FEATURES

- Conveyance Improvements
- Levee & floodwall
- Diversion Channel
- Berm
- 2 Diversion Structures

SCHEDULE

- Advertisement Q4 FY25

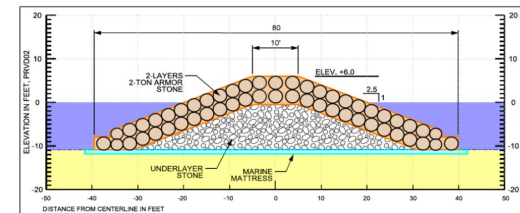
SOLICITATION TYPE

- A/E MATOC



SJ METRO (CATAÑO BREAKWATERS)

Design Contract



FEATURES

- Breakwaters 0.7 miles long along the Cataño shoreline

SCHEDULE

- TBD

SOLICITATION TYPE

- A/E MATOC





MILITARY CONSTRUCTION CONTRACTS



St. Croix Vehicle Maintenance Shop – Construction

FEATURES

- Construct vehicle maintenance shop in Bethlehem Complex, St. Croix

SCHEDULE

- Advertisement TBD

ACQUISITION STRATEGY

- UNRESTRICTED

SOLICITATION TYPE

- BVTO

ESTIMATED VALUE

- \$25M - \$100M



St. Croix Civil Support Training Facility – Construction

FEATURES

- Design and construction of an 18,340 SF Ready Building

SCHEDULE

- Advertised

ACQUISITION STRATEGY

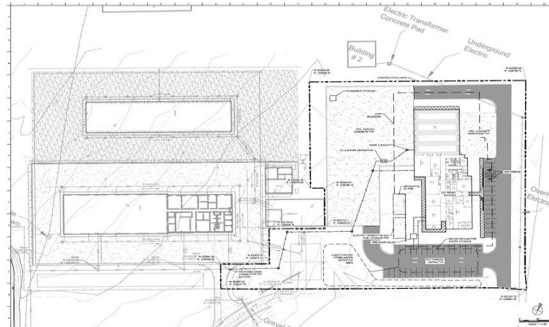
- UNRESTRICTED

SOLICITATION TYPE

- BVTO

ESTIMATED VALUE

- \$25M - \$100M



OTHER CONTRACTS



Military & Civil Works Design IDIQ Contract

SCOPE OF WORK

- Materials Testing
- A/E Services
- General Design

SCHEDULE

- Advertisement Q1 FY26

ACQUISITION STRATEGY

- TBD

SOLICITATION TYPE

- TBD

ESTIMATED VALUE

- \$200M+



Rio Nigua Geotech & Seismic Analysis Design



SCOPE OF WORK

- Geotechnical survey data gathering and seismic analysis

SCHEDULE

- Advertisement Q4 FY25

SOLICITATION TYPE

- A/E MATOC

Construction Management Services

SCOPE OF WORK

- Provide construction management support services

SCHEDULE

- Advertisement Q1 FY26

SOLICITATION TYPE

- TBD

